

# Jesyre SQG Installation

AUTHORS	GIACOMO VENERI;LUCA COLUCCI;MARTA VENERI
TITLE	JESYRE SQG INSTALLATION
VERSION	1.0
STATUS	
LAST UPDATE	

## Revisioni

Autore	Data	Versione	Note
Giacomo Veneri;Luca Colucci;Marta Veneri		1.0	Creazione

## Indice dei contenuti

<b>1</b>	<b>HOW TO INSTALL.....</b>	<b>3</b>
1.1	VIRTUAL BOX MACHINE.....	3
1.2	TO CONFIGURE MACHINE .....	4
1.3	GLASSFISH SERVER .....	5
<b>2</b>	<b>SUPPORT .....</b>	<b>9</b>
2.1	HELP US TO DEVELOP NEW VERSION .....	9

FILE	VERSION.	DATE	#CHARS	TITLE	PAGE
INSTALLAZIONESGQ_V1.DOC	1.0	02/03/2011	1840	JESYRE SQG INSTALLATION	<b>2/9</b>

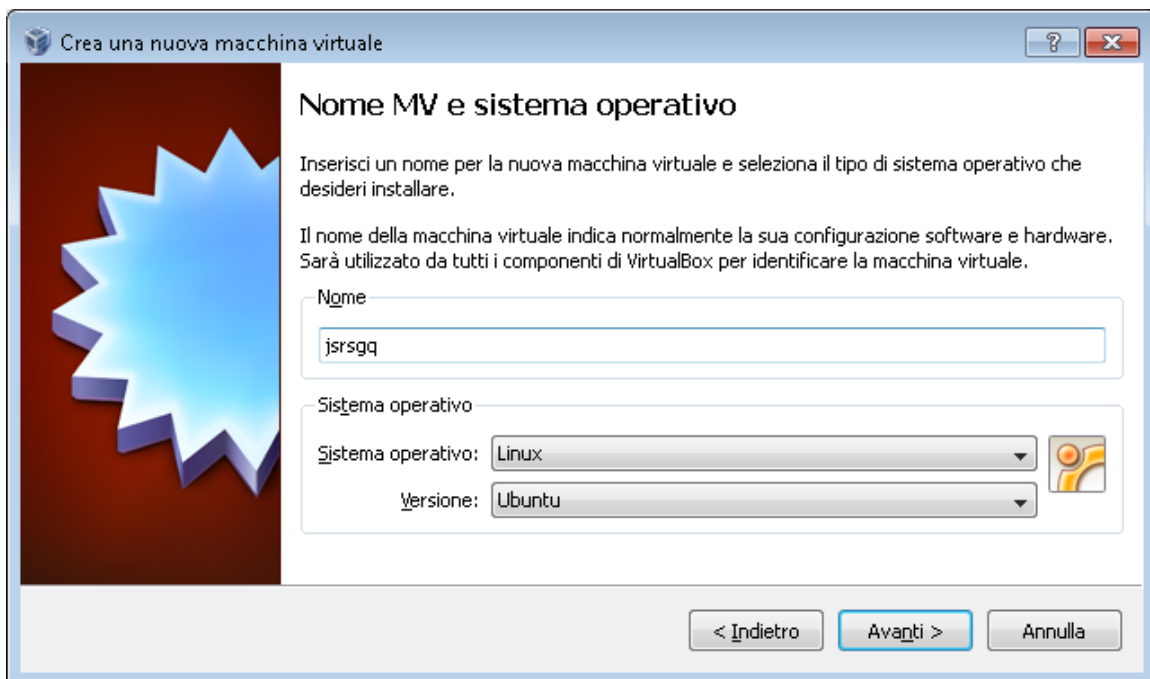
## 1 How to install

The installation of Jesyre SGQ is possible in 2 different ways:

1. Virtual Box Machine (Easy way)
2. Glassfish Server (Expert)

### 1.1 Virtual Box Machine

1. Download VirtualBox from Oracle Web Site and install
2. Download Jesyre SGQ from Source Forge official site  
<http://sourceforge.net/projects/jsrsgq/>
3. Unzip through 7zip the image file (put it on a large hd)
4. Create the Virtual Machine:



Locate the virtual disk

FILE	VERSION.	DATE	#CHARS	TITLE	PAGE
INSTALLAZIONESGQ_V1.DOC	1.0	02/03/2011	1840	JESYRE SGQ INSTALLATION	3/9

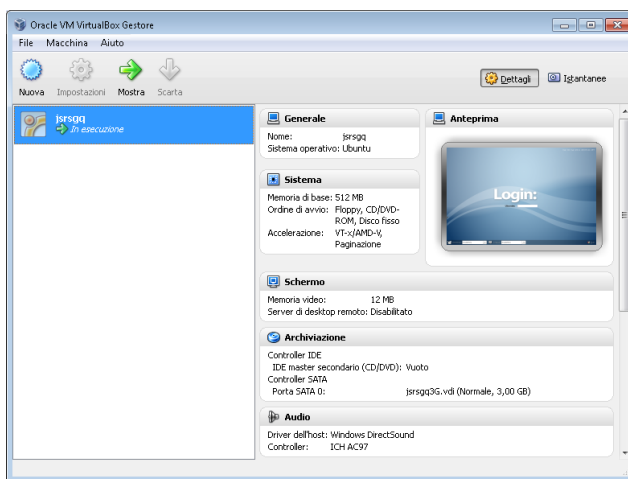


Enjoy Jesyre SGQ.

Point your browser to <http://jsrsgq/>

## 1.2 To configure machine

Access to machine and log in.



FILE	VERSION.	DATE	#CHARS	TITLE	PAGE
INSTALLAZIONESGQ_V1.DOC	1.0	02/03/2011	1840	JESYRE SQG INSTALLATION	4/9

Default username and password are

	Username	Password
linux operatin system	jsrsgq	jsrsgq
Postgres database	jsrsgq	jsrsgq
Administrator	admin	jsrsgq
Financial manager	financial	jsrsgq
Quality manager	quality	jsrsgq
Tech manager	tech	jsrsgq

The best way to configure sqg is to look on PATH\_SGQ/WEB-INF/data/conf and PATH\_SGQ/WEB-INF/data/bin in order to modify path and mail.

### 1.3 Glassfish Server

A little bit complex:

1. Install Java 6
2. Install Glassfish 3+
3. Install PostgreSQL 8+
4. Extract from Virtual Box Machine Installation vdi file:
  - a. Postgres Database (pgdump)
  - b. JSRSGQ webapps directory
5. Import postgres DB
6. Configure Glassfish

Configure web application

FILE	VERSION.	DATE	#CHARS	TITLE	PAGE
INSTALLAZIONESGQ_V1.DOC	1.0	02/03/2011	1840	JESYRE SQG INSTALLATION	5/9

<b>General</b>	<b>Descriptor</b>
----------------	-------------------

### Web Application

Modify an existing web application.

**Name:** JSRCollaboration

**Context Root:** /sgq  
Path relative to server's base URL

**Virtual Servers:** server  
Associates an internet domain name with a physical server

**Description:**

**Status:**  Enabled

**Location:** file:/home/etruria/JSRCollaboration/

### Configure connection Pool

Resources > JDBC > Connection Pools > SGQ

<b>General</b>	<b>Advanced</b>	<b>Additional Properties</b>
----------------	-----------------	------------------------------

### Edit Connection Pool

Modify existing JDBC connection pools. A JDBC connection pool is a group of reusable connections for a particular databas

#### General Settings

**Name:** SGQ

**Datasource Classname:** \* org.postgresql.ds.PGSimpleDataSource  
Vendor-specific classname that implements the DataSource and/or XADataSource APIs

**Resource Type:** javax.sql.DataSource  
Must be specified if the datasource class implements more than 1 of the interface.

**Description:**

FILE	VERSION.	DATE	#CHARS	TITLE	PAGE
INSTALLAZIONESGQ_V1.DOC	1.0	02/03/2011	1840	JESYRE SQG INSTALLATION	6/9

Resources > JDBC > Connection Pools > SGQ

## Edit Connection Pool Properties

Modify properties of existing JDBC connection Pool

**Additional Properties (5)**

|

	Name	↕	Value
<input type="checkbox"/>	portNumber		5432
<input type="checkbox"/>	databaseName		sgq
<input type="checkbox"/>	serverName		localhost
<input type="checkbox"/>	user		sgq
<input type="checkbox"/>	password		

## Set jndi connection

Resources > JDBC > JDBC Resources > jdbc/SGQ

## Edit JDBC Resource

Edit an existing JDBC data source.

**JNDI Name:** \* jdbc/SGQ

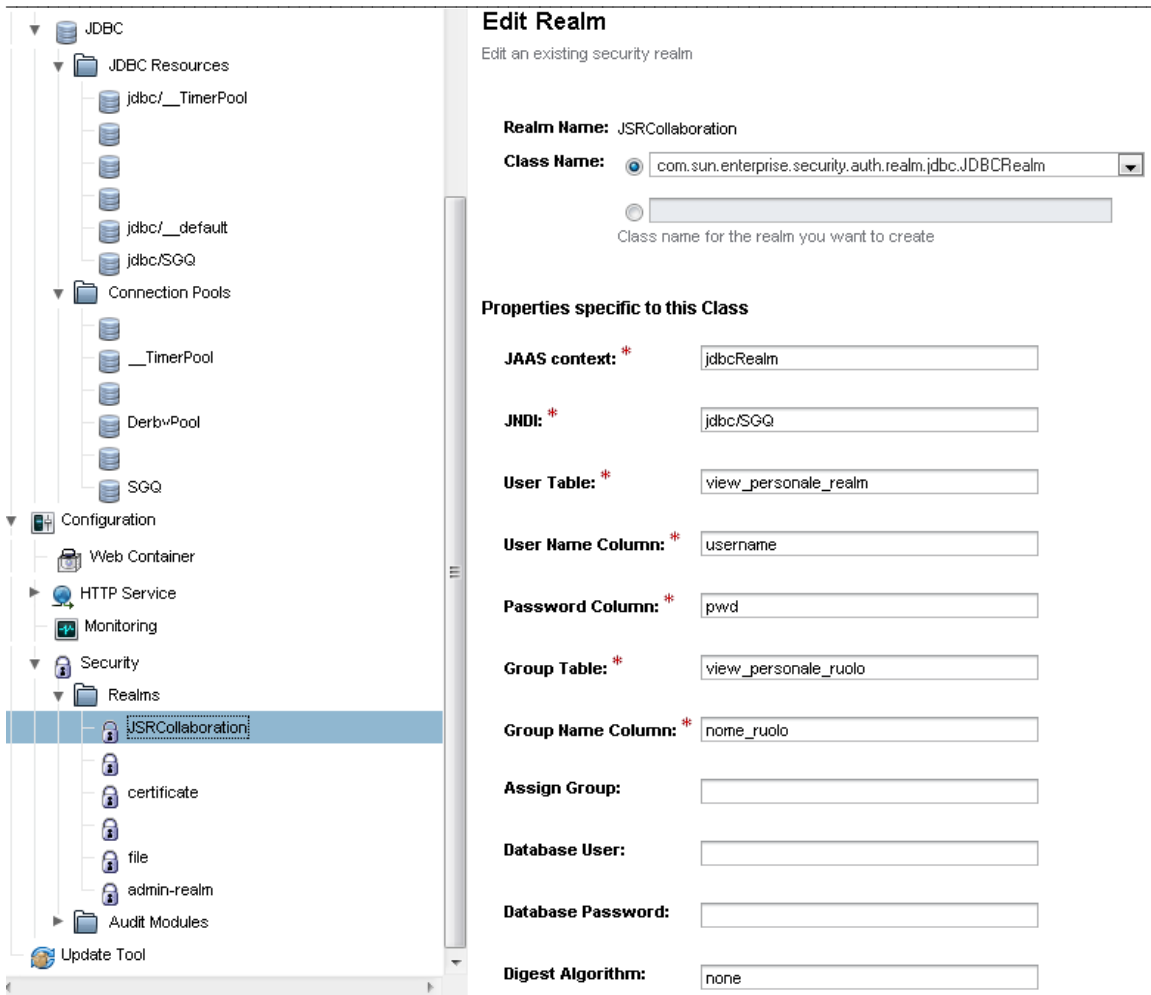
**Pool Name:** \*    
 Use the [JDBC Connection Pools](#) page to create new pools

**Description:**

**Status:**  Enabled

## Configure Security

FILE	VERSION.	DATE	#CHARS	TITLE	PAGE
INSTALLAZIONESGQ_V1.DOC	1.0	02/03/2011	1840	JESYRE SQG INSTALLATION	7/9



**Edit Realm**  
 Edit an existing security realm

**Realm Name:** JSR Collaboration

**Class Name:**  com.sun.enterprise.security.auth.realm.jdbc.JDBCRealm

Class name for the realm you want to create

**Properties specific to this Class**

**JAAS context: \***

**JNDI: \***

**User Table: \***

**User Name Column: \***

**Password Column: \***

**Group Table: \***

**Group Name Column: \***

**Assign Group:**

**Database User:**

**Database Password:**

**Digest Algorithm:**

To change parameters get a look on PATH\_SGQ/WEB-INF/data/conf:

1. Resource.xml
2. Tool.xml

FILE	VERSION.	DATE	#CHARS	TITLE	PAGE
INSTALLAZIONESGQ_V1.DOC	1.0	02/03/2011	1840	JESYRE SQG INSTALLATION	8/9

---

## 2 Support

---

For support contact Etruria Innovazione ScpA via banchi di Sopra 31 53100, Siena,

tel: 0039 0577 247452

fax: 0039 0577 48727

web site: [www.etinnova.it](http://www.etinnova.it)

1. Giacomo Veneri [giacomo.veneri@etinnova.it](mailto:giacomo.veneri@etinnova.it)
2. Marta Veneri [marta.veneri@etinnova.it](mailto:marta.veneri@etinnova.it)
3. Luca Colucci [luca.colucci@etinnova.it](mailto:luca.colucci@etinnova.it)

### 2.1 Help us to develop new version

---

Open Source is not free, then, when you appreciated our work, consider to donate us money.

### 2.2 License

---

GNU GENERAL PUBLIC LICENSE Version 3, 29 June 2007 -  
<http://www.gnu.org/licenses/gpl.html>

FILE	VERSION.	DATE	#CHARS	TITLE	PAGE
INSTALLAZIONESGQ_V1.DOC	1.0	02/03/2011	1840	JESYRE SQG INSTALLATION	9/9